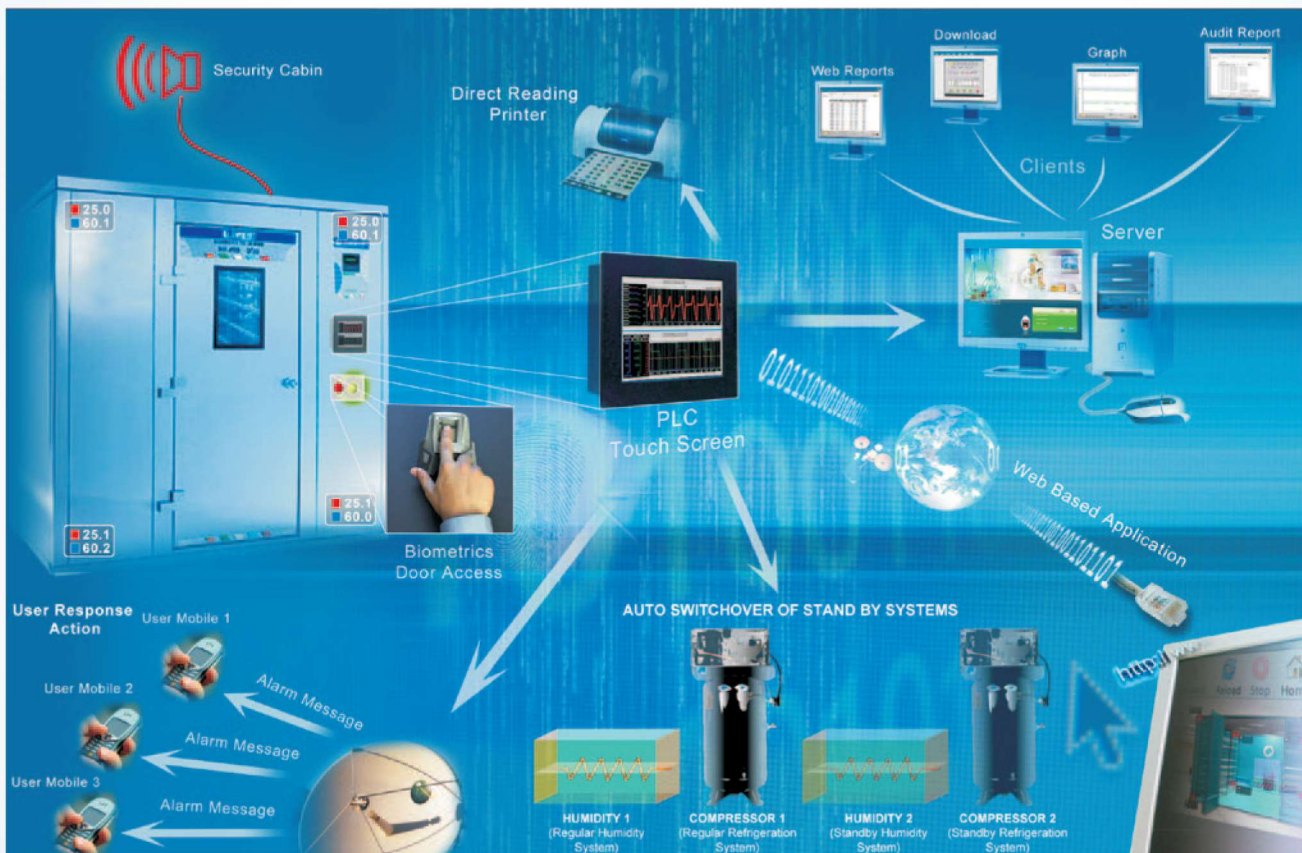


COMMON SOFTWARE FOR MULTIPLE EQUIPMENTS AND MULTIPLE CHAMBERS.

This software is designed as per the requirements of US FDA 21 CFR part 11 and is built upon the fast scanning core to view online status with minimum delay. The communication scanning core is optimized with the new advanced Stability Architecture with following features:

UNIQUE FEATURES

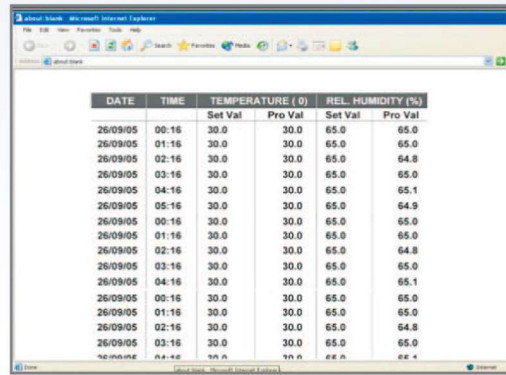
- Password Protection**
 Alpha-numeric password with automatic password expiry. Separate password for individual user.
- Data Downloading**
 Data downloading can be launched in the background without slowing down the computer performance.
- Secure User Login**
 Secure user login with 100% trace audit trail.
- Audit Trail**
 It is possible to trace all activities of users after login to logout.
- Software Control**
 All the parameters are settable such as alarm limits, set points up to chamber start and stop function.
- Real Time Trend**
 Can monitor individual chamber with process value and trends for all the sensors, online and offline.



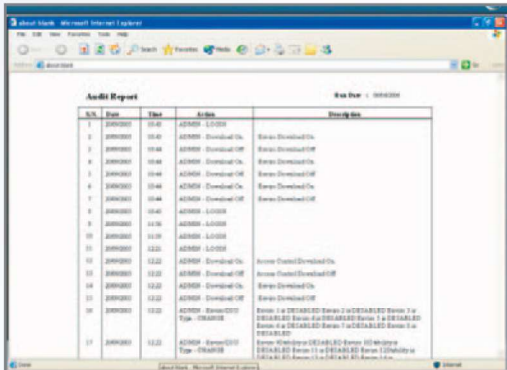
Functional Aspect of Stability Chamber



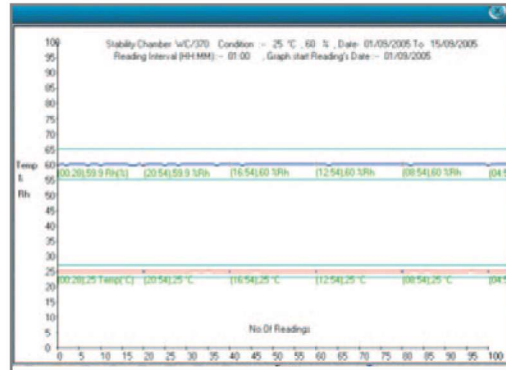
Log In Screen



Tabular Report



Audit-Trail Report



Graphical Report

UNIQUE FEATURES [CONTD...]

- **User Rights**

Administrator can define user access level, can create new users and can assign user rights.

- **Input / Output status**

All the control inputs and output status visible like door open, stand by system working etc.

- **Reports and Graphs**

Reports available such as chamber wise, door access, audit trail, events, sms alerts, mean Kinetic temperature reports, error reports chamber graph, scanner reports.

- **Auto Backup Utility**

User can select backup type for automatic backup or manual backup facility also available.

- **Restore**

To view / analyze backup data facility to restore the required database.

- **Door Access Setup**

Can get details of number of users allotted with door opening events and remark option.

- **Event Logging**

All the safety cut-offs and alarms, sms from mobile alerts, event (change over of stand by system) is logged in the software.