

SENVEC

SENVEC VACUUM SORTER

VS SERIES



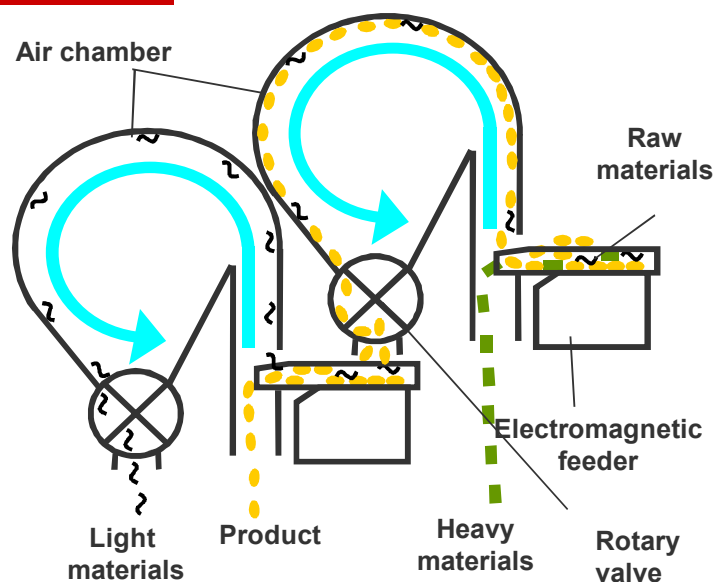
VS20T-N/E
W × H × D = 905 × 1580 × 1400
(※Feeding conveyor is optional.)

◇ SORTING PRINCIPLE

Using the flow of completely uniformed air into the air chamber, it separates light and heavy materials by the suction power.

This machine has two stages of sorting part. The suction power of each stage is adjustable independently.

And it is possible to change the quality of products.

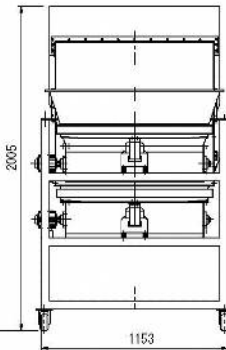
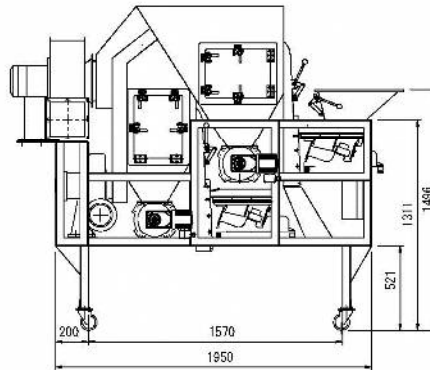
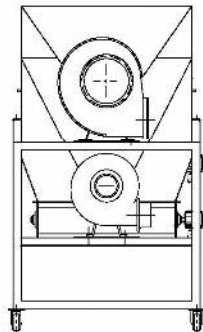
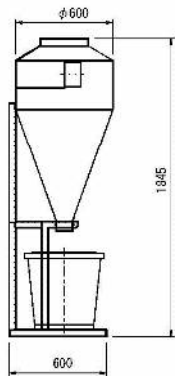
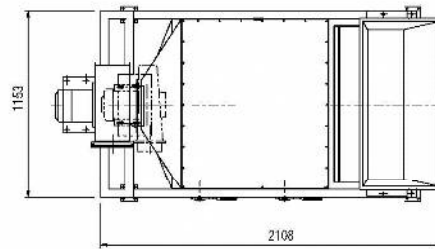
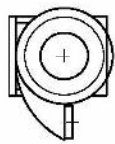
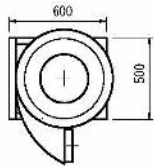


◇ SORTING EXAMPLES

- Cereals, dried vegetables, sea alga, marine products, green tea, black tea, various evaporated foods, plastic, ore and etc...

◇ CHARACTERISTICS

- High quality and High efficiency by the specially designed suction system.
- Independent adjustment for each stage.
- Cleaned air exhaust by the cyclone dust collector.
- Washable air chamber, rotary valve and cyclone.
- Easy installation with casters.



Model	VS10S-N/E	VS10T-N/E	VS20T-N/E	VS30T-N/E	VS20T	VS30T
Width[mm]	720	720	905	1185	625	1153
Depth[mm]	1795	1950				
Height[mm]	1738	2005				
weight[kg]	150	300	515	600	550	635
Electric Requirements [kW]	1.0	2.0	3.1	3.1	3.0	3.2



HATTORI SEISAKUSHO CO.,LTD.

2 Miyanogo Shirakawa Uji-city Kyoto
611-0022,JAPAN

TEL +81-774-21-2357
FAX +81-774-24-0532

URL <http://www.senvec.co.jp>
E-mail info@senvec.co.jp

AGENT